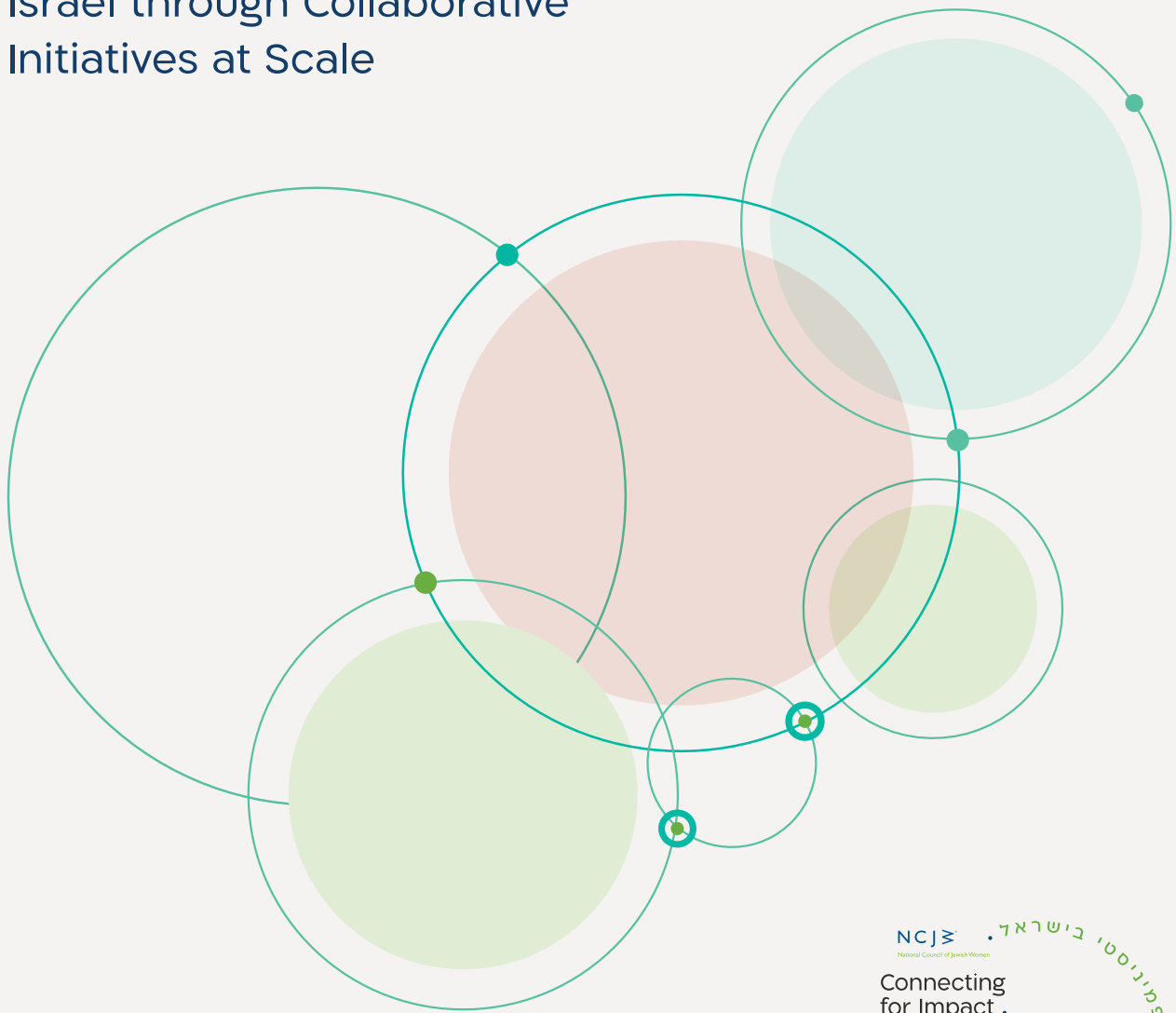


# Connecting *for* Impact.

Advancing Gender Equity in  
Israel through Collaborative  
Initiatives at Scale



NCJ 

National Council of Jewish Women

NCJ   
National Council of Jewish Women

Connecting  
for Impact .

**מתחברות  
להשפעה**

• نتواصل مع  
• محاور التأثير .

המחברות להשפעה  
הלאומית לנשים  
היהודיות

## NCJW's Connecting for Impact.

National Council of Jewish Women (NCJW) has been a key partner to Israel's feminist ecosystem since the beginnings of its formalization within Israeli society. In 2018, we established our field-building program **Connecting for Impact (CFI)** in partnership with the NCJW Women and Gender Studies program at Tel Aviv University. **CFI brings together feminist leaders from across the spectrum of Israeli society in leadership cohorts and convenings to foster strategic thinking and drive collective impact.**

### Laying the Groundwork for Israel's Future.

October 7th and the subsequent war, alongside the ongoing democracy crisis, have highlighted the severity of gender inequity in Israel and the detrimental impact of the absence of women at decision-making tables.

**For a future of peace, security and democracy to be possible, we must build foundations of equity.**

In Spring 2024, CFI launched the Collaborative Planning Process for Gender Equity > convening 30 diverse Israeli feminist leaders in a process carefully crafted with partners Shatil and BeDo to define shared goals and create a plan for the future.

Together, this group grappled over the course of several months with broad strategic questions, such as:

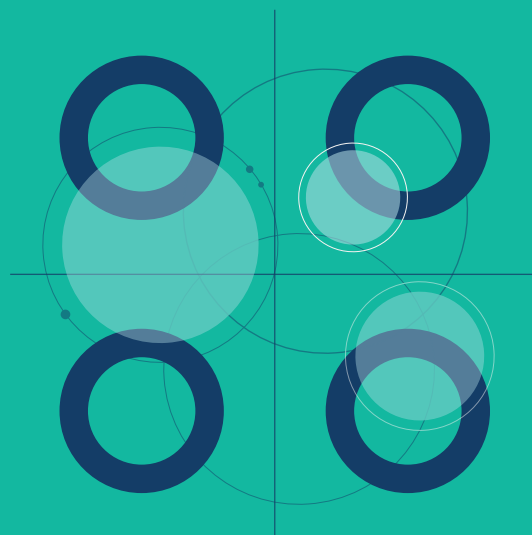
- How can we ensure **women** gain seats at key decision making tables which **influence and implement policy**?
- As Israel rebuilds from the trauma of war, how can we **scale women's service organizations** to meet magnified needs?
- What kinds of processes can advance broad social change to advance **gender equity in all aspects of day-to-day life**?
- Which infrastructure is needed to shore up the **feminist ecosystem** and equip it to work with **greater impact**?

The process led to the creation of four "impact clusters" comprised of organizations with a shared focus. Within each cluster, participants defined common goals and designed strategic initiatives for their ongoing working group. Together, they form the foundation of a shared Theory of Change.

IMPACT CLUSTERS:

## Four Pathways to Gender Equity in Israel.

The four impact clusters have proposed collaborative strategic initiatives for roll out from 2026. In 2025, they are undertaking a seed phase to test the feasibility, lay the groundwork, or provide proof of concept for their full plans.



IMPACT CLUSTER 1:

### Centers of Decision Making



This cluster aims to establish a **GENDER EQUITY POLICY FORUM** as a collaborative platform, enabling advocacy organizations to operate in a synchronized, proactive, and strategic manner. The forum will serve as an engine for policy change and a basis for effective influence in the public, legal and political spheres.

IMPACT CLUSTER 2:

### Resilience and Recovery



Led by a cooperative of organizations that support women on the margins of the risk spectrum, this cluster aims to establish a **TRAUMA RECOVERY TRAINING CENTER** to equip practitioners and authorities to address a critical gap and rehabilitate marginalized women impacted by the war. The center will offer a modular curriculum developed by participating field organizations, based on their decades of expertise and therapeutic models.

IMPACT CLUSTER 3:

### Mainstreaming Gender Equity Across Israeli Society



This cluster aims to launch an **IMPACT ACCELERATOR FOR GENDER EQUITY**, to equip participating field organizations to shift attitudes and behaviors towards equity in areas of everyday life such as education, health, culture, public spaces etc. The accelerator will foster multi-sector partnerships, bridging the expertise of the feminist field with institutions with extensive reach and influence.

IMPACT CLUSTER 4:

### Infrastructure and Capacity Building for the Feminist Field



In order to equip the feminist field to advance gender equity in all areas of society, CFI seeks to evolve as an **INFRASTRUCTURAL PLATFORM** which nurtures capacities for collective impact and advances best practices and professional development within the field.

### Steering Committee



**Kalela Lancaster**



**Eynat Meytahl**



**Ronie Nof Maltz**



**Ghadir Hani**

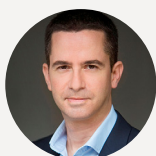


**Ronit Shoval**



**Adi Wimmer**

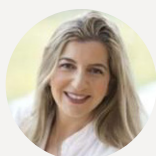
### Advisors & Consultants to Clusters



**Eran Brauer**



**Merav Baret**



**Sharon Dwek**



**Dr. Tammy Rubel-Lifschitz**



**Yael Boim-Fein**



**Dr. Yael Hasson**

### Cluster Leads

#### IMPACT CLUSTER 1: **Centers of Decision Making**



**Tal Hochman**  
Israel Women's Network

**Gali Etzion**  
Naamat

**Ghadir Hani**  
Feminist Activist for Shared Society

**Keren Horowitz**  
Formerly, The Rackman Center

#### IMPACT CLUSTER 2: **Resilience and Recovery**



**Dr. Naama Goldberg**  
Lo Omdot MeNegged

**Ronit Shoval**  
Eden Association

**Tamar Shwartz**  
Women's Spirit

**Ela Alon**  
Itach-Maaki Women Lawyers for Social Justice

#### IMPACT CLUSTER 3: **Mainstreaming Gender Equity Across Israeli Society**



**Ronie Nof Maltz**  
Women and Their Bodies

**Michal Litmanovich**  
Equal Work

#### IMPACT CLUSTER 4: **Infrastructure and Capacity Building for the Feminist Field**



**Or Abu**  
Hamakom

**Adi Wimmer**  
El HaLev

**Sharon Brick Deshen**  
Kolech Nashim

NURTURING SUCCESSFUL OUTCOMES:

## A Partnership-Based Philanthropic Approach.

Systemic gender inequity hinders Israeli society on all levels: security, social resilience, economy, and more.

The Jewish Funders Network's [Guide to Gender Lens Philanthropy](#) > produced by the JFN Israel Gender Giving Forum, outlines the critical need for donors to apply a gender lens to their giving in order to address deep inequities in every field of life which will prohibit Israel's full recovery from the war, and restrict advancement for society as a whole.

By nurturing collaborative capacities and supporting Israeli feminist organizations to envision, plan, and implement large scale initiatives together, Connecting for Impact is playing a key role in securing Israel's future – a future of equity, resilience, and healing.

We invite partners to join us in this unique opportunity to leverage giving by advancing initiatives which hold the potential for collective impact, broad social change and scaled solutions to acute needs.

Donors of the JFN Israel Gender Giving Forum joined with NCJW to cover the costs of the seed phase, amounting to \$260,000. We are now seeking funds for the full rollout phase from 2026.

By partnering with us to provide investment from an early stage, you will become an active stakeholder in this bold initiative, supporting the clusters to develop optimal plans to secure funding at scale.



\* FULL PROPOSALS AND A DETAILED BUDGET ARE AVAILABLE ON REQUEST >

